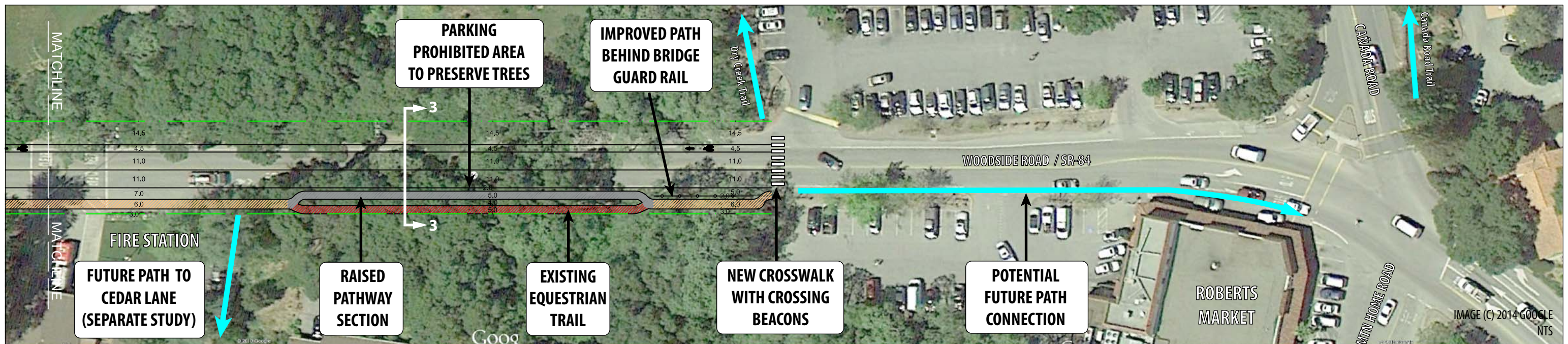
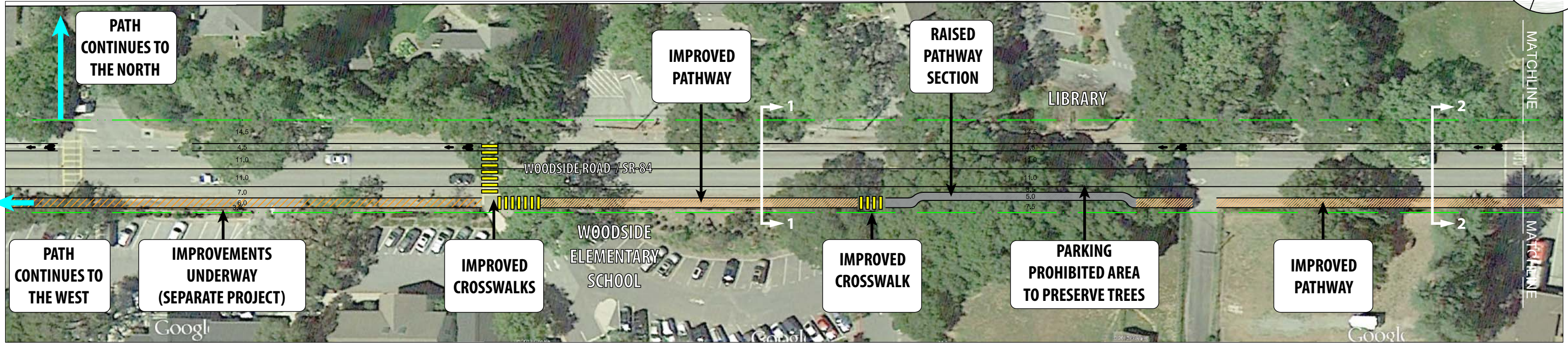
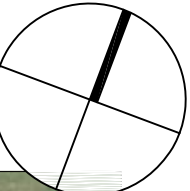


# TOWN OF WOODSIDE SAFE ROUTES TO SCHOOL



# WOODSIDE ROAD SOUTH PATH CONCEPT

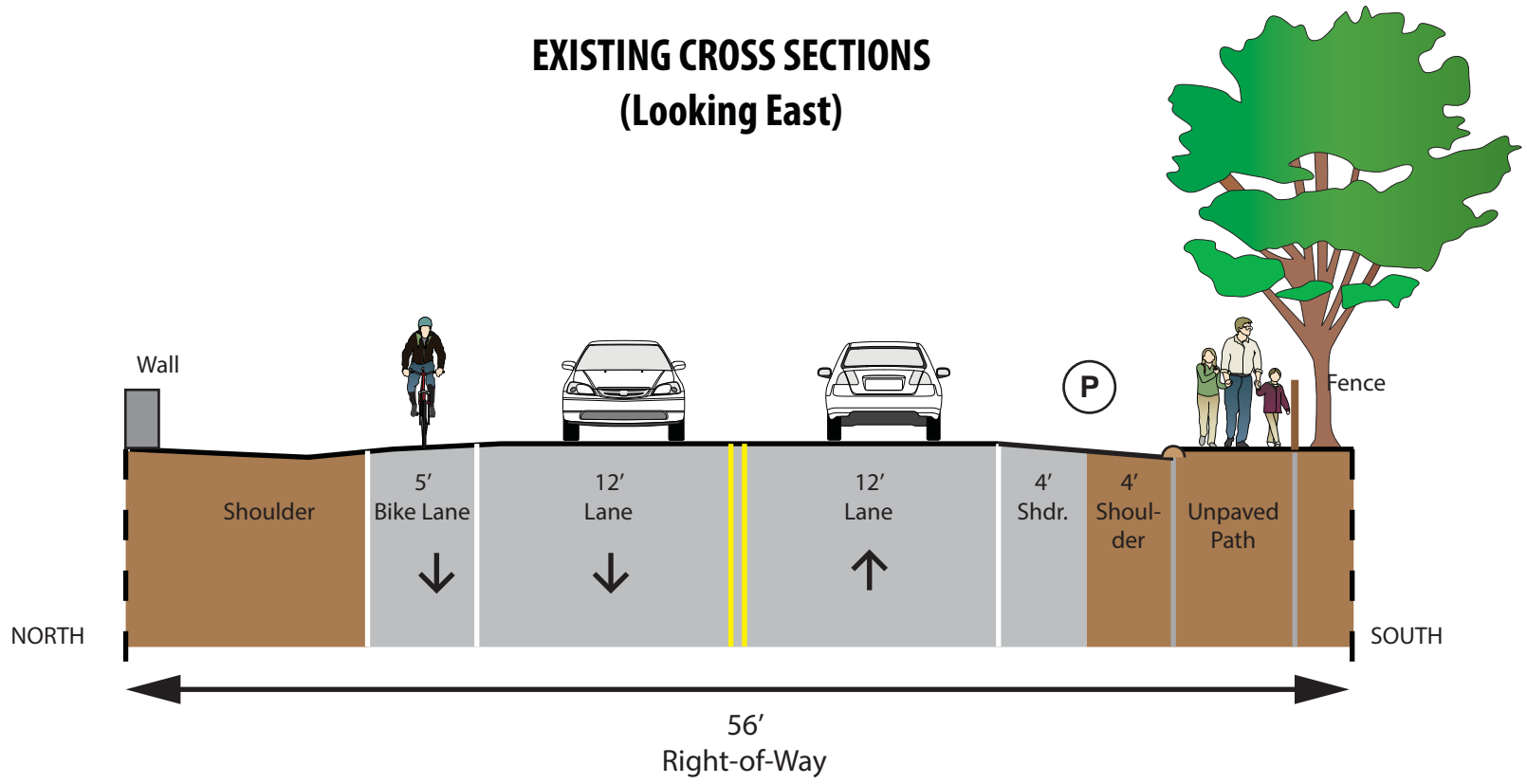
JULY 2014



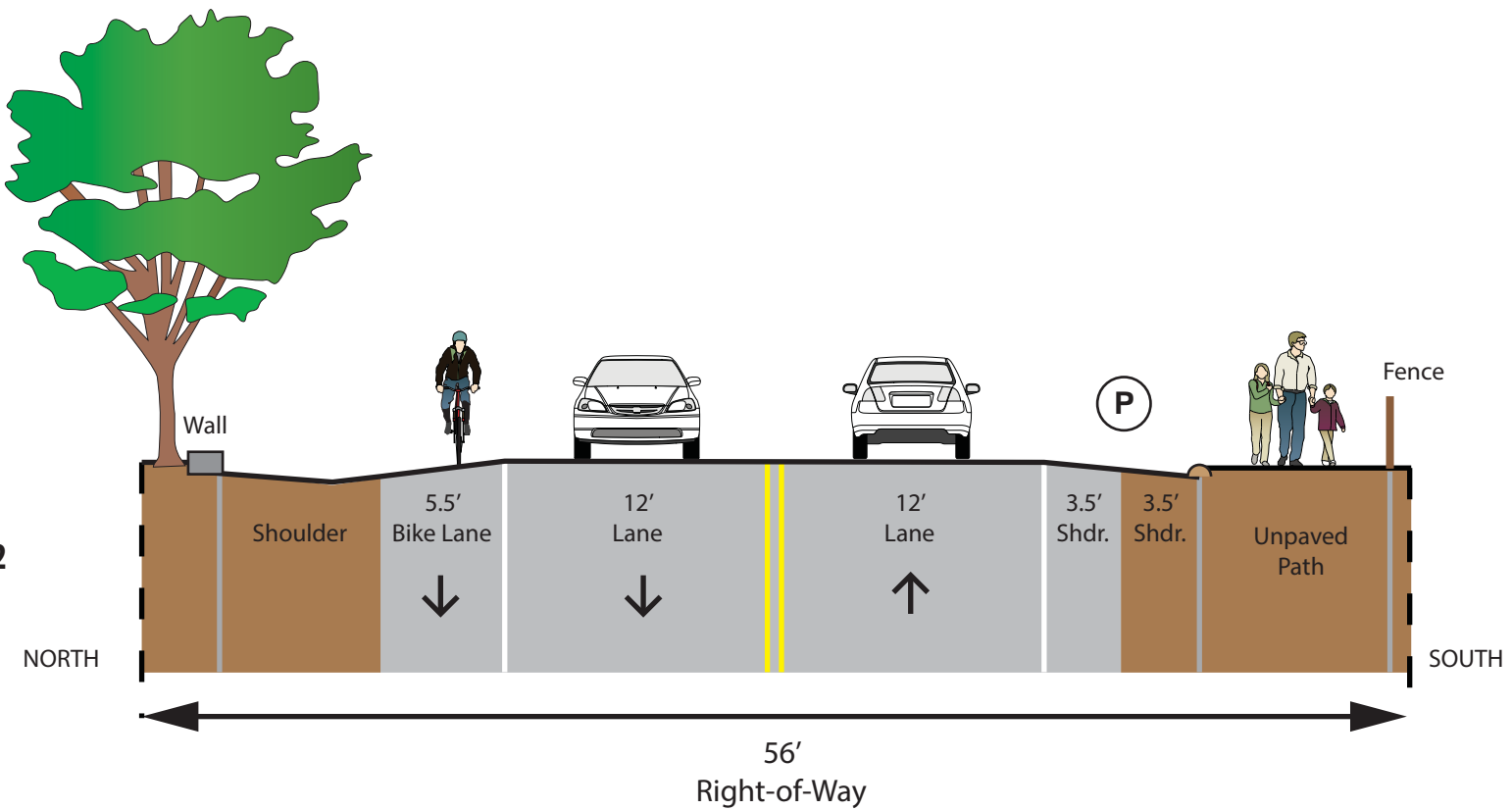
# TOWN OF WOODSIDE SAFE ROUTES TO SCHOOL

## EXISTING CROSS SECTIONS (Looking East)

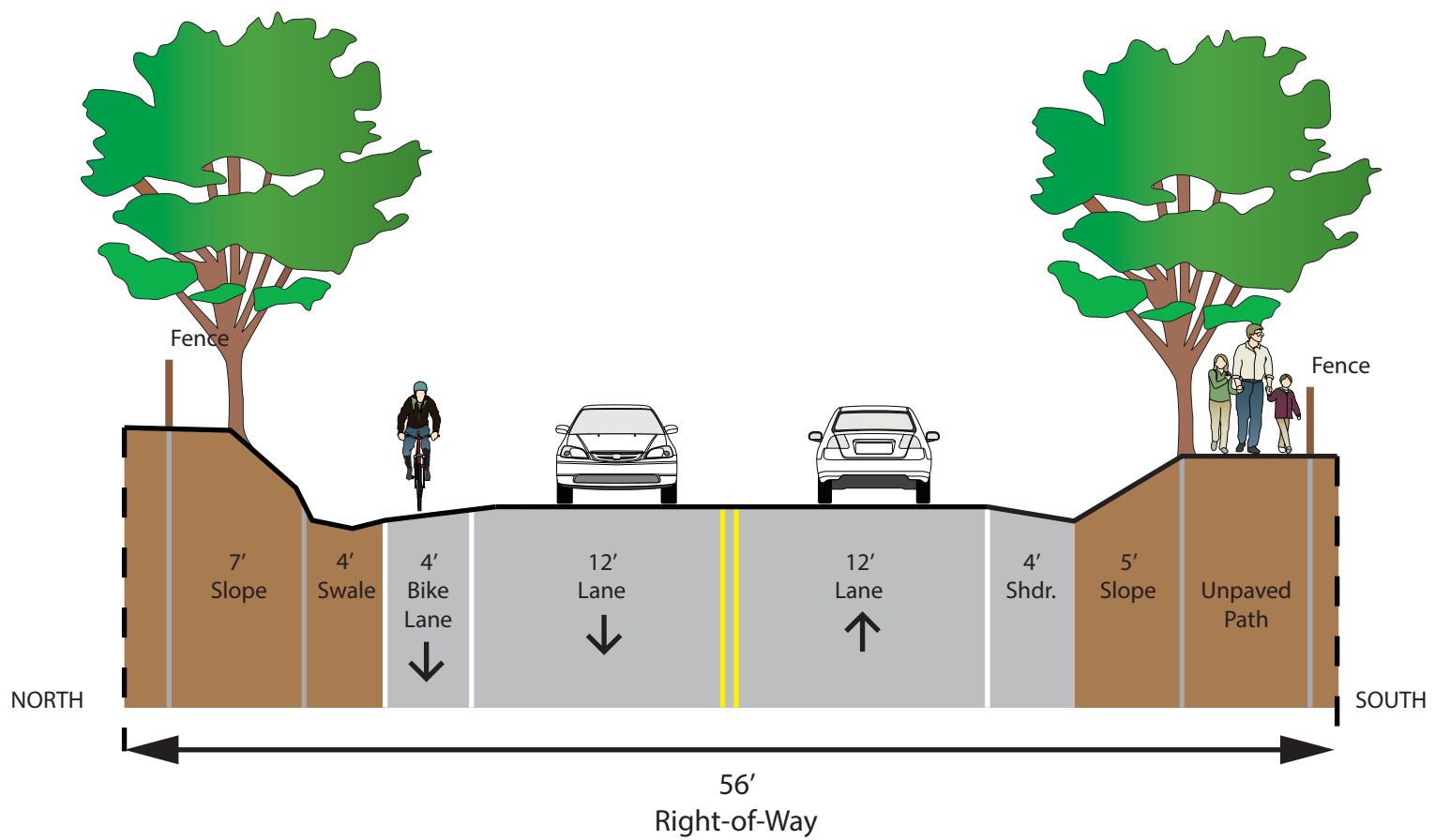
### Section 1



### Section 2



### Section 3



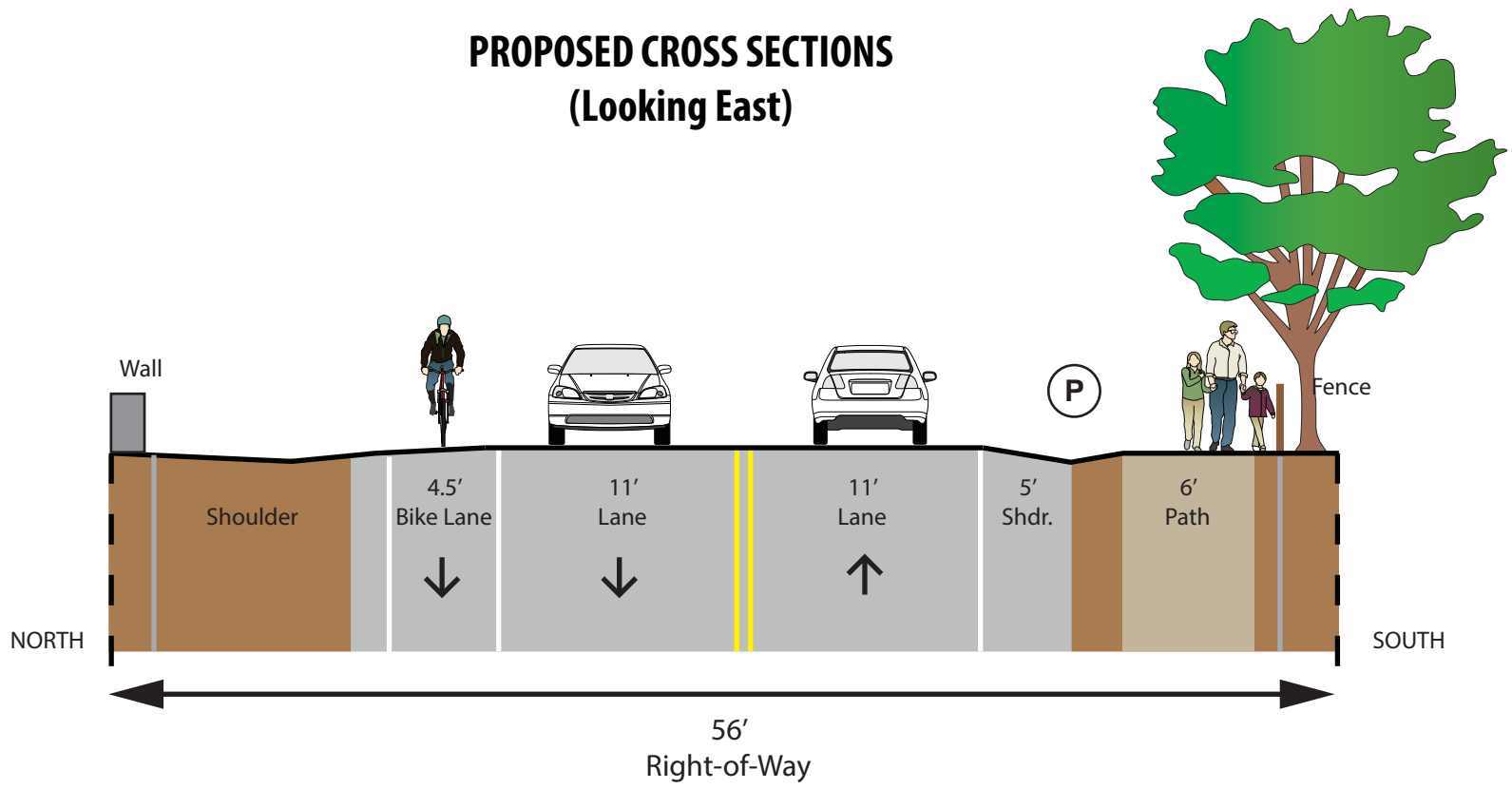
# WOODSIDE ROAD SOUTH PATH CONCEPT

JULY 2014

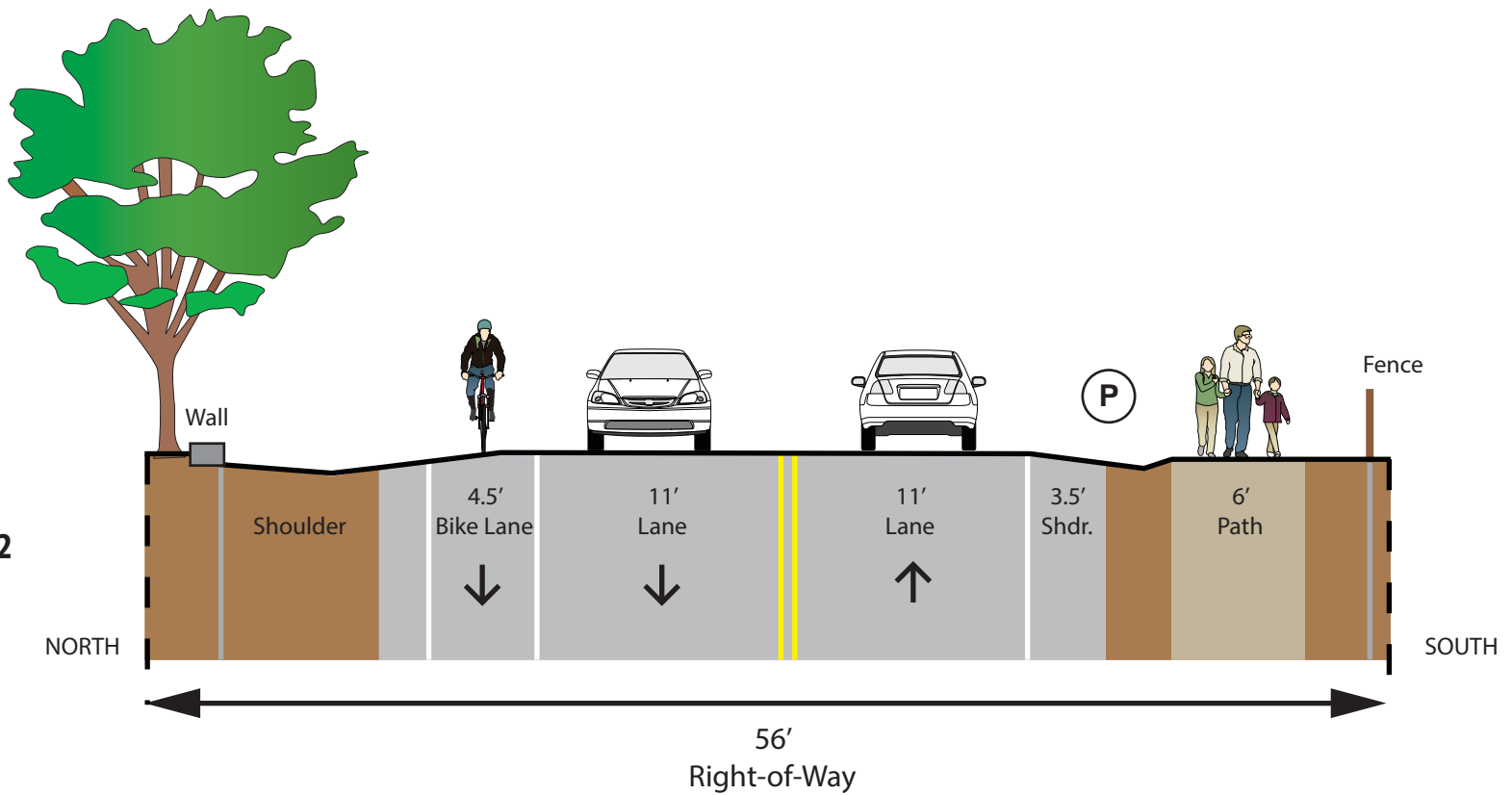
# TOWN OF WOODSIDE SAFE ROUTES TO SCHOOL

## PROPOSED CROSS SECTIONS (Looking East)

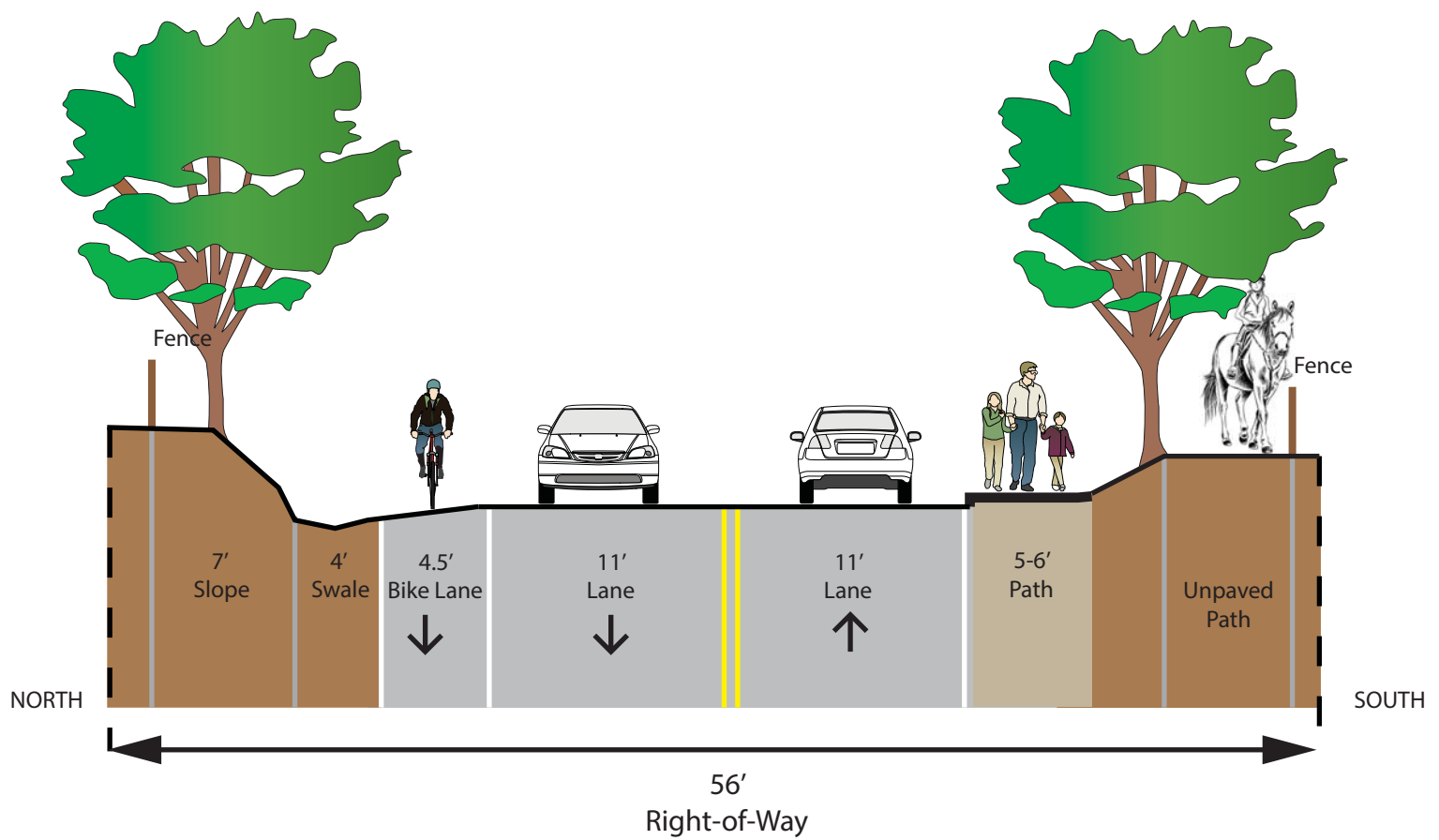
### Section 1



### Section 2



### Section 3

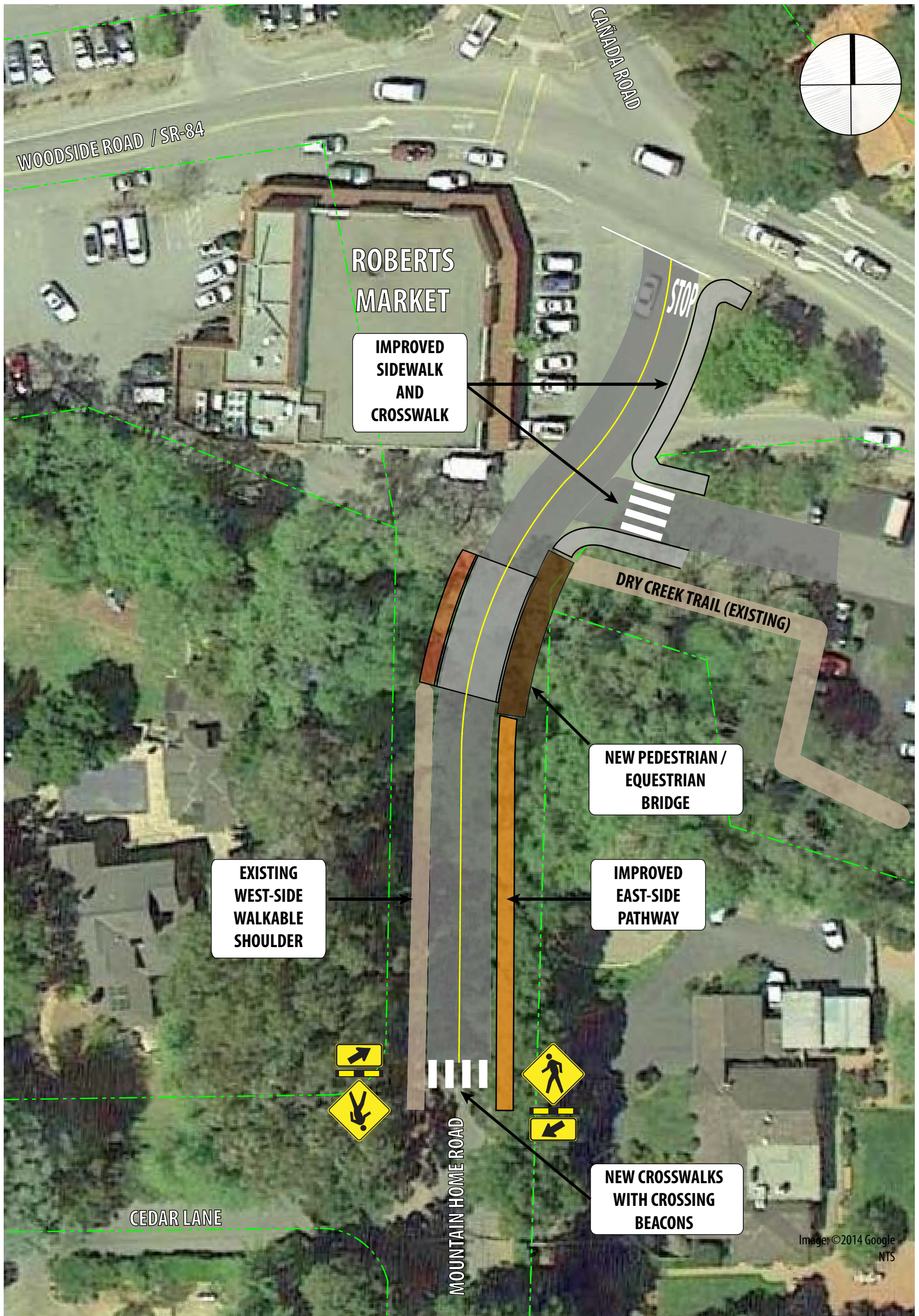


# WOODSIDE ROAD SOUTH PATH CONCEPT

JULY 2014



# TOWN OF WOODSIDE SAFE ROUTES TO SCHOOL



## MOUNTAIN HOME ROAD PATH CONCEPT

JULY 2014



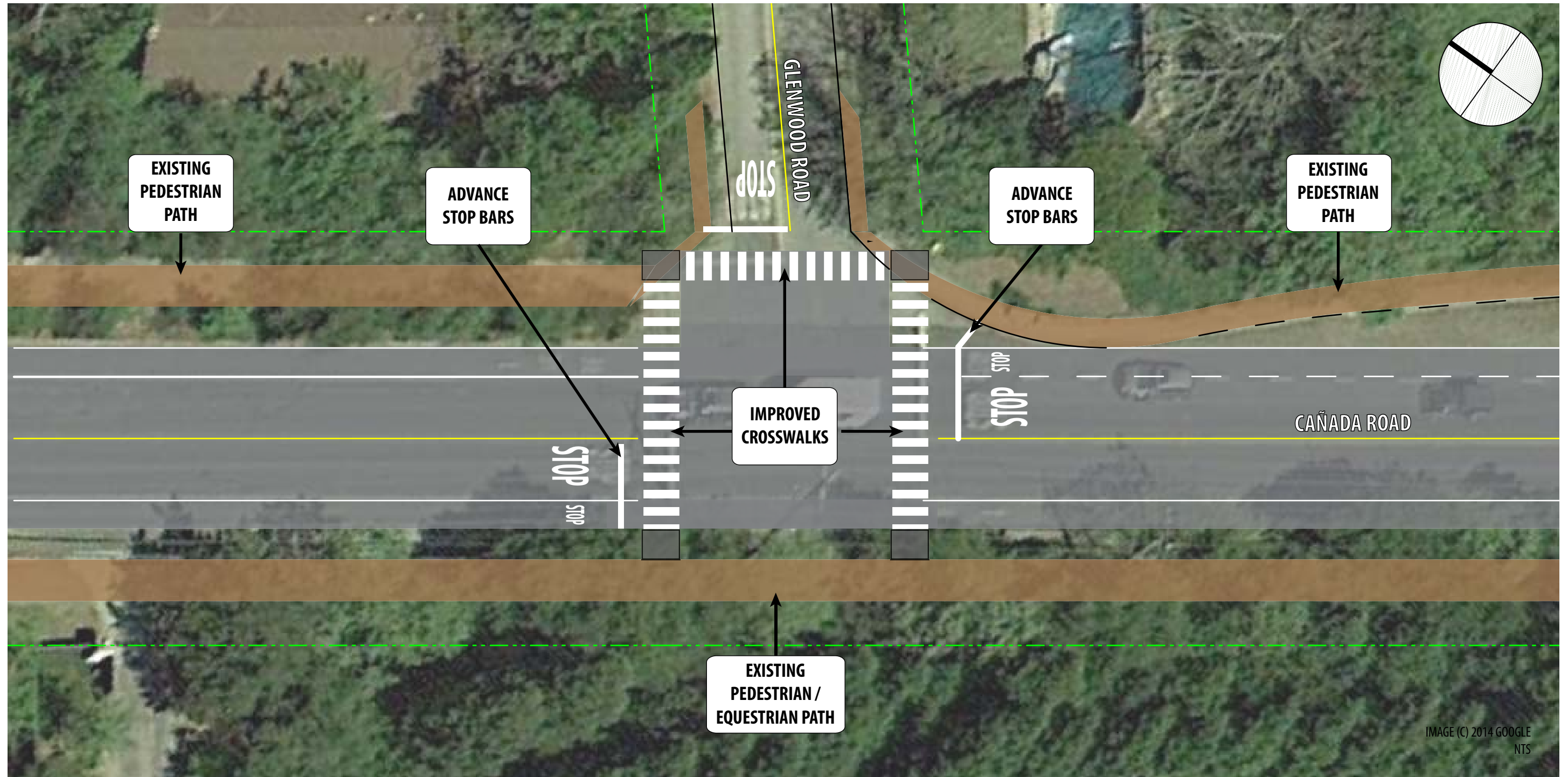
# TOWN OF WOODSIDE SAFE ROUTES TO SCHOOL



## FIRE STATION EAST PATH CONCEPT

JULY 2014

# TOWN OF WOODSIDE SAFE ROUTES TO SCHOOL



## CAÑADA ROAD - GLENWOOD ROAD INTERSECTION CONCEPT

JULY 2014